

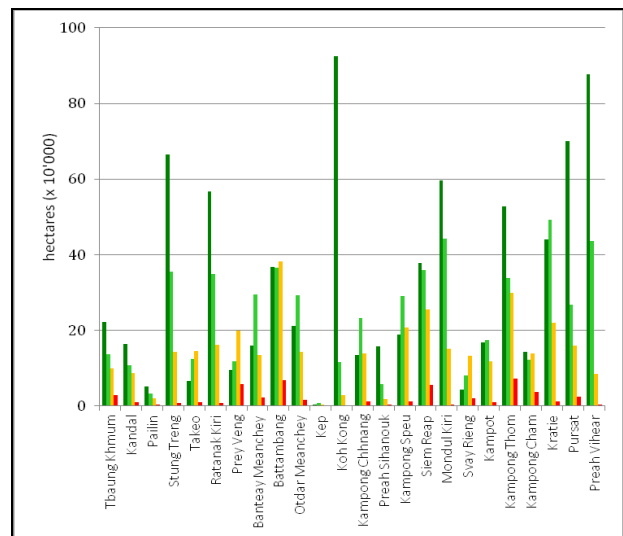
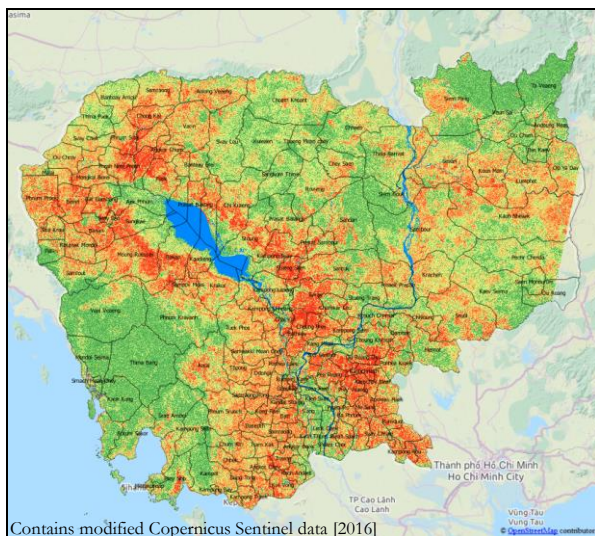
Sentinel-1A confirms delay of early wet season due to drought.

Already now, it is observed that the start of the Early Wet Season, usually taking place early April is delayed.

RIICE will provide 12 day updates over the next month to observe the delay of the start of season and locate in which provinces the season has started and to what extent.



Cambodia is facing its worst drought in 50 years. While the drought has been ongoing since June last year, it is expected to affect particularly the non-irrigated wet seasons of 2016. According to an early RIICE analysis in late April 2016 using Sentinel-1A data at 20 meters resolution, a delay of the start of season is most likely and the area of land that is rice cultivated is likely to decrease. The illustration below shows the vegetation versus bare soil status (green to red colour) and major rivers/water bodies (in blue) of Cambodia. Green tonalities represent vegetated areas, orange corresponds to bare soil and dry vegetated areas, while bare soil condition is depicted in red. Given the limited water availability (the water has been used during the previous dry season) and delay of precipitation, the large extension (around 40,000 sqkm) of orange (around 20% of the total area) and red (3%) color located in those regions – where typically rice (and other crops) should already have started – is noticeable.



Information reported in this bulletin has been generated using MAPscape-RICE and data acquired in April 2016 by Sentinel-1A (owned by EU and developed & operated by ESA). Background map ©OpenStreetMap contributors.

This RIICE BULLETIN was produced through collaborative work between the Cambodian RIICE team, sarnap, International Rice Research Institute (IRRI), and Swiss Agency for Development and Cooperation (SDC). The Cambodian RIICE team consists of Department of Planning of Statistics (DPS), Cambodia Agricultural Research and Development Institute (CARDI), Department of Rice Crop (DRC), and Department of Agricultural Land Resources Management (DALRM), all under the Ministry of Agriculture, Forestry, and Fisheries (MAFF) of Cambodia.